

## iRFID500 and Pixavi Phone

Digitalizing operations with RFID technology



# Digitalizing inventory and asset management

iRFID500 is a powerful handheld passive RFID reader that can connect to your smart devices via Bluetooth or work as a standalone device for operational flexibility.

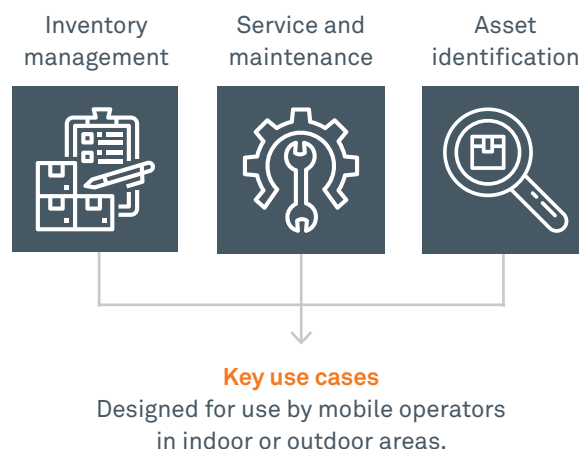
The iRFID500 is designed to streamline business processes like tracking assets, monitoring maintenance tasks and demonstrating regulatory compliance. Fully certified for use in ATEX, IECEx, and North American hazardous areas, the iRFID500 also holds radio approvals for ETSI and FCC frequencies.

**Key information:**

- ATEX and IECEx
- Zones 0, 1, 2, 20, 21, and 22
- Mining, M1
- US and Canada Class I, II, and III, Div 1
- Bluetooth – connect to your smart devices

The iRFID500 has an integrated antenna suited for short to medium range applications and, thanks to the Bluetooth® communication interface, it is a perfect UHF RFID add-on for any Bluetooth® enabled host such as a PC, a smartphone, a PDA, or a tablet. The reader is compatible with Windows XP/7/10, Windows CE/Mobile, Android, iPhone, and iPad. It is a Bluetooth class 2 device and is compliant with UHF RFID ISO 18000-6C/EPC C1G2 standards.

The HID mode supports native keyboard emulation allowing it to interact directly with applications, office automation SW or any other generic solution requiring manual input.



# iRFID500 and Pixavi Phone

Did you know that the iRFID500 is also compatible with the BARTEC Pixavi Phone for Zone 1/21 and Class I, Div. 1/Zone 0 applications?

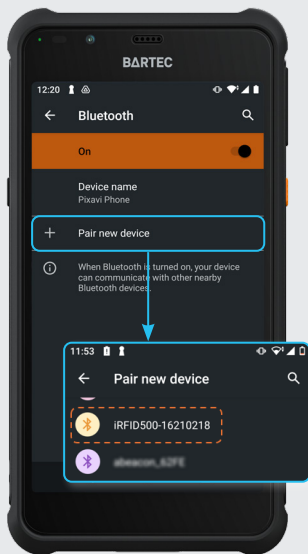
- No need for additional devices, such as laptops or tablets
- Seamlessly connect via Bluetooth

## Pairing is easy!

In three simple steps you can be up and ready to start collecting data

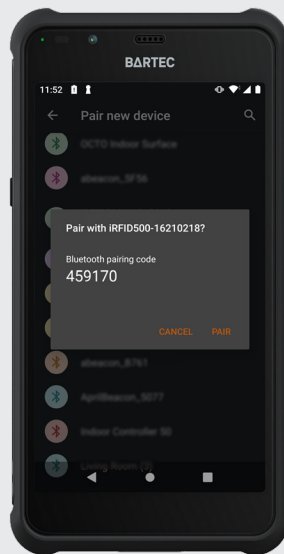
### Step 1

On your Android device, go to Settings and enable the Bluetooth. Select iRFID500 and wait for the connection to be completed.



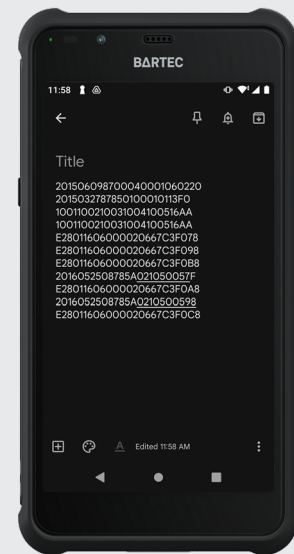
### Step 2

Click Ok to confirm the passcode if required. Once the connection is established the Bluetooth blue LED turns on.



### Step 3

Launch a text editing app (or any other app accepting keyboard input). Start an inventory read by pressing the trigger button.



If you have any questions about Extronics iRFID500 and UHF products, please contact us today.

## **BARTEC**

### **BARTEC GmbH**

Max-Eyth-Str. 16  
97980 Bad Mergentheim  
Germany

Phone: +49 7931 597 0  
Phone +44 (0) 1606 738 446  
[info@bartec.com](mailto:info@bartec.com)  
[info@extronics.com](mailto:info@extronics.com)

**[bartec.com](http://bartec.com)**