

- Easy and exact setting of the desired value
- Easy installation
- High IP rating

The ComEx potentiometer is used in virtually all hazardous (potentially explosive) locations where machine functions are controlled by means of adjustable voltage distributors. The module can be combined with a potentiometer actuator (scale graduation 0 to 10). Conductors are connected via of terminals on the back of the module which have an increased safety level. The easy installation of the potentiometer actuating element without the need for the use of tools ensures conformance to the high IP degree of protection.

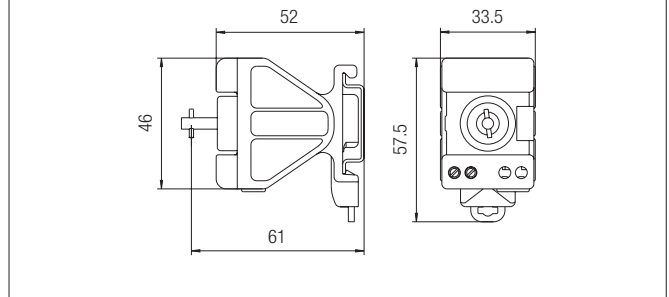
**Explosion protection**

Marking ATEX	II 2G Ex db eb IIC Gb I M2 Ex db eb I Mb
Certification	CML 17 ATEX 1119 U
Marking IECEx	Ex db eb IIC Gb Ex db eb I Mb
Certification	IECEx CML 17.0057U
Other approvals and certificates, see www.bartec.de	
Ambient temperature	-55 °C to +60 °C

**Technical data**

Protection class	determined by the actuating element and ComEx enclosure, min. IP 66, terminals IP 20
Rated insulation voltage	500 V
Max. rated voltage	AC/DC 230 V
Resistance	1 kΩ to 10 kΩ
Curve shape	linear
Resistance tolerance	± 20 %
Rated output	max. 1 W at $T_a \leq +40\text{ °C}$
Resistor material	carbon film on ceramics
Rotation	mech. 285° to -5° electr. about approx. 250°
Torgue (beginning)	0.5 to 1.5 Ncm
Torgue (end stop)	≥ 100 Ncm
Enclosure material	thermoplastic
Connection	double terminals 2 x 2.5 mm <sup>2</sup> , fine stranded
Mechanical life	25.000 sinusoidal cycles
Storage and transport temperature	-55 °C to +70 °C
Weight	ca. 71 g

**Dimensions**



**Ordering information**

Wiring diagram	Resistance	Code no.
	1 kΩ	4
	2.2 kΩ	5
	4.7 kΩ	6
	10 kΩ	7

Other resistances on request.

Complete order no.

**Potentiometer** without actuating element 07-3371-1D  0

Please enter code number.

Technical data subject to change without notice.

**Actuating element**

Standard (scale 1 to 10)

Order no. 05-0003-007600

Increased oil resistance (scale 1 to 10)

Order no. 05-0003-007600BN

**Notes for installation and inspection:**

At rated voltage:

≤ AC 50 V/≤ DC 120 V

(protection low voltage in accordance with DIN VDE 0100 T. 410)

potentiometer drive shaft can be operated without actuating element.

At rated voltage:

≥ AC 50 V to max. AC/DC 230 V

potentiometer drive shaft can only be operated with actuating element

or has to be deenergized.