



Electrode line bushing

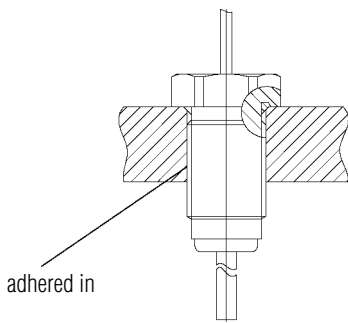


Description

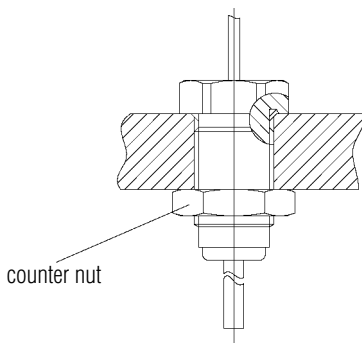
Waste water pumps can be fully submergible units. The pump assembly and motor are often separated from each other by an oil fore-chamber sealed by mechanical seals. Any leaks in the shaft seals need to be registered in order to prevent malfunctions or failure of the motor and to arrange for inspections in good time.

BARTEC's electrode line bushings Ex + sealed allow signals to be reliably transmitted through the walls of pressure-proof enclosed operating equipment, even in areas in which an explosion hazard exists. Only electrical circuits certified as intrinsically safe may be connected to the electrode line bushing.

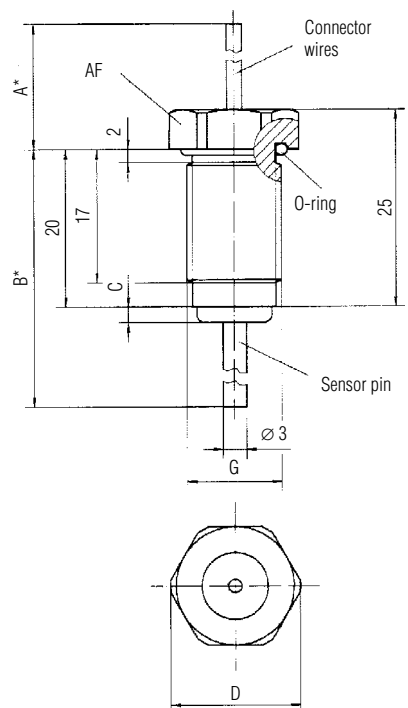
Example application



Example application



Dimensions



See table for standard lengths, other lengths on request

Safety notice

Electrode line bushings that are damaged must be replaced. The electrode line bushing must be secured against twisting and self-loosening.

Explosion protection

Ex protection type

ATEX II 2G Ex d II
I M2 Ex d I

Certification

PTB 02 ATEX 1061 U

Other approvals and certificates, see www.bartec-group.com

Working temperature

-20 °C to +70 °C or +110 °C depending on the core wire used

Technical data

Material

- Sleeve Brass nickel-plated or stainless steel
- Gauge Brass or stainless steel
- Thread M10 x 1; M12 x 1; M16 x 1.5 others on request

Pressure on the Ex e side

≤ 6 bar

Rated insulation voltage

≤ 30 V

Rated constant current

≤ 1 A

Connection method

Cable wires 0.5 to 1.5 mm²

Versions deviating from the basic data are available on request.

Please use the customer requirements form at the end of the chapter!

Selection chart

Dimensions in mm							➔ Order no.
G	C	D	SW	A	B	O-ring	
M10 x 1	2	14.5	13	500	36	9 x 1.5	37-9405-1230/1000
M12 x 1	2	16.5	15	500	36	10 x 1.5	37-9405-123B/1000
M16 x 1,5	2	21.0	19	500	36	14 x 2	37-9405-123D/1000

Technical data subject to change without notice.